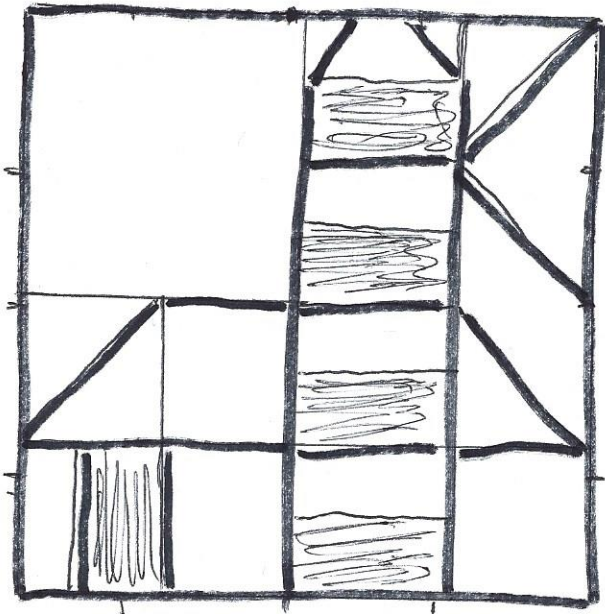


ROCKET QUILTERS BLOCK OF THE MONTH – LIGHTHOUSE

1



PIECES TO BE CUT:

SKY:

- One square 6 ½" x 6 ½"
- Four squares 3 ½" x 3 ½"
- Two squares 1 ¾" x 1 ¾"

YELLOW LIGHT BEAM:

- Two squares 3 ½" x 3 ½"

BUILDING

- Three squares 3 ½" x 3 ½"

DOOR

- One square 3 ½" x 3 ½"

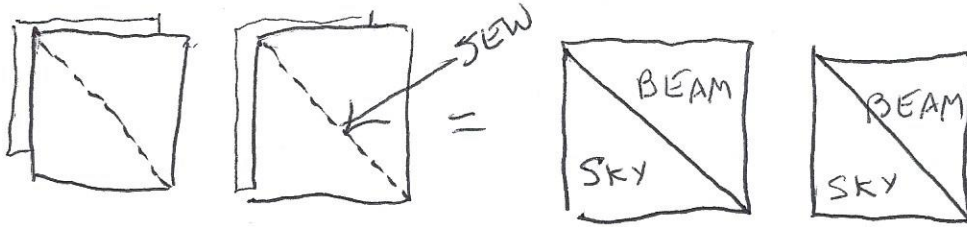
ROOF:

- Three squares 3 ½" x 3 ½"

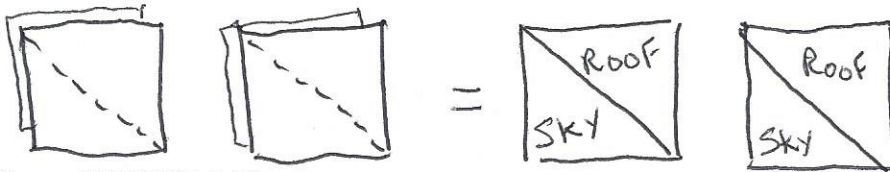
TOWER:

- Four squares Light Colored fabric 3 ½" x 3 ½"
- Four squares Dark Colored fabric 3 ½" x 3 ½"

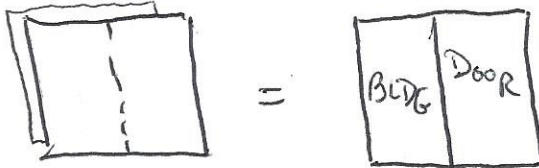
- Place 2 **SKY** 3 1/2" squares right sides together with 2 **YELLOW LIGHT BEAM** 3 1/2" squares. Sew a diagonal line. Open and trim. You should have two 3 1/2" half square triangle pieces, half sky, half yellow.



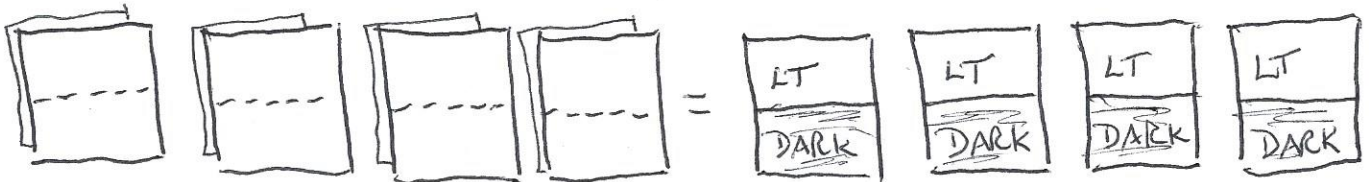
- Place 2 **ROOF** 3 1/2" squares right sides together with 2 **SKY** 3 1/2" squares. Sew a diagonal line. Open and trim. You should have two 3 1/2" half square triangle pieces, half sky, half yellow.



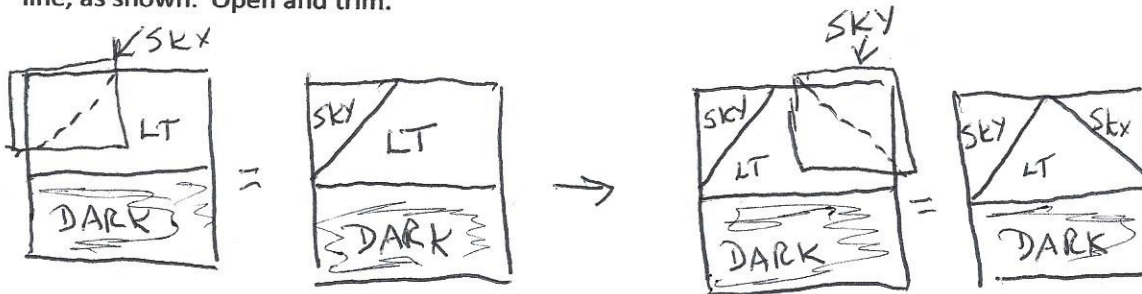
- Place a **BUILDING** 3 1/2" square right sides together with the **DOOR** 3 1/2" square. Sew a middle line, top to bottom. Fold back and trim. You should have a 3 1/2" square



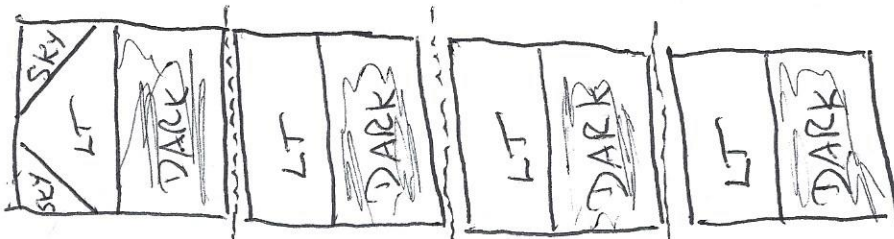
- Place 4 **TOWER LIGHT COLORED** 3 1/2" squares right sides together with 4 **TOWER DARK COLORED** squares. Sew a straight line across the middle of each. Open and trim to a 3 1/2" square. Make sure your stitching line is in the center, so that you have equal parts light and dark.



- Select one of the **TOWER** pieces. Place one 1 3/4" **SKY** square, right sides together to the light edge of the piece. Sew a diagonal line as shown below. Place the second 1 3/4" **SKY** square to the other corner. Sew a diagonal line, as shown. Open and trim.



- Sew the 4 **TOWER** pieces together as shown. Be sure to place the **SKY** corners as shown.



- Lay out the pieces as shown on the first page. Sew together. Keep checking to make sure your triangles go the right direction. All done!