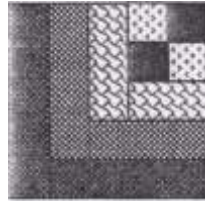


Rocket Quilt Guild Mystery Quilt 2916-7

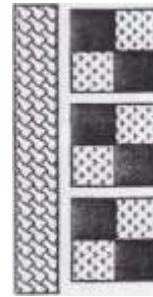
Part 2



Make (18)

Unit 2 — Cabin Blocks

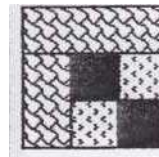
- Step 1:** Cut (5) 2 1/2" strips from the **medium** fabric.
Cut (8) 2 1/2" strips from the **medium dark** fabric.
Cut (10) 2 1/2" strips from the **dark** fabric.



- Step 2:** Use the **medium light/black** Four Patch units from part 1.

Position the four patch units as shown and chain stitch to the **medium** strips. Cut apart. Press toward **medium**.

- Step 3:** Position units from Step 2 as shown and chain stitch to the rest of the **medium** strips. Cut apart. Press toward **medium**.



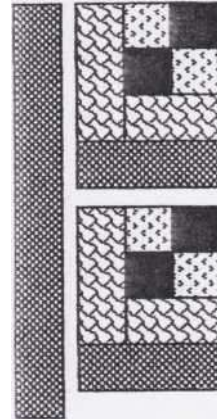
****Note:** The picture didn't scan. Make this unit.

- Step 4:** Square up to 6 1/2" x 6 1/2".

- Step 5:** Position units from Step 4 as shown and chain stitch to the **medium dark** strips. Cut apart. Press toward **medium dark**.



Step 6: Position units from Step 5 as shown and chain stitch to the rest of the **medium dark** strips. Cut apart. Press toward **medium dark**.

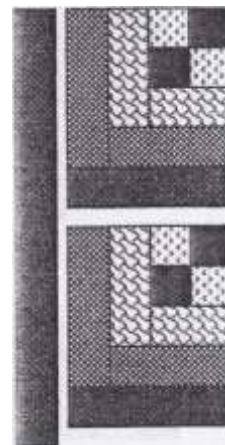


Step 7: Square up to 8 1/2" x 8 1/2".

Step 8: Position units from Step 7 as shown and chain stitch to **dark** strips. Cut apart. Press toward **dark**.



Step 9: Position units from Step 8 as shown and chain stitch to the rest of the **dark** strips. Cut apart. Press toward **dark**.



Step 10: Square up to 10 1/2" x 10 1/2".